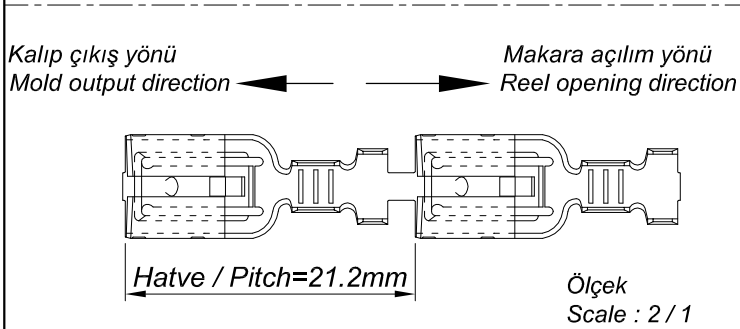
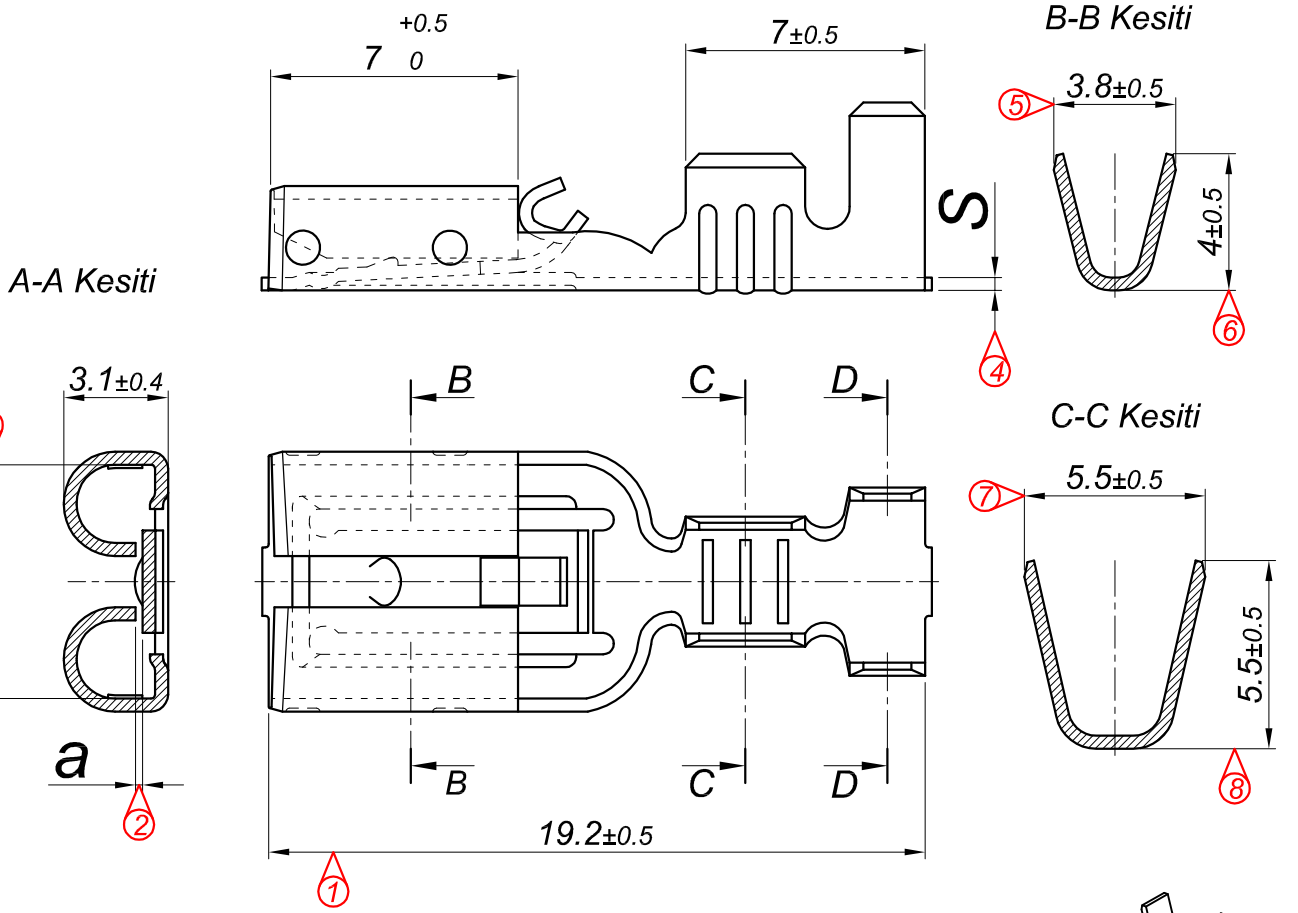



PARÇA KODU PART CODE	PARÇA ADI PART NAME	ERKEK TERMINAL MALE TERMINAL	a ÖLÇÜSÜ (AYAR) a MEASURE (SET)	s ÖLÇÜSÜ (KALINLIK) s MEASURE (THICKNESS)	Malzeme Material	Kaplama Coating
TD 2137.50 RP	KİLİTLİ DİŞİ FİŞ 6.3 (YENİ TİP) (0.50) =RP=	0.50	0.40 +0.1 / -0	0.38±0.05	(CuZn30) Pirinç / Brass	—
TD 2137.50 RPK	KİLİTLİ DİŞİ FİŞ 6.3 (YENİ TİP) (0.50) =RPK=	0.50	0.40 +0.1 / -0	0.38±0.05	(CuZn30) Pirinç / Brass	Kalay / Sn (3-5µ)
TD 2137.50 RPG	KİLİTLİ DİŞİ FİŞ 6.3 (YENİ TİP) (0.50) =RPG=	0.50	0.40 +0.1 / -0	0.38±0.05	(CuZn30) Pirinç / Brass	Gümüş / Ag (≥1µ)
TD 2137.50 RÇN	KİLİTLİ DİŞİ FİŞ 6.3 (YENİ TİP) (0.50) =RÇN=	0.50	0.40 +0.1 / -0	0.40±0.05	Nikel kaplı çelik / Nickel plated Steel	Nikel / Ni (≥1.5µ)
TD 2137.80 RP	KİLİTLİ DİŞİ FİŞ 6.3 (YENİ TİP) (0.80) =RP=	0.80	0.65 +0.1 / -0	0.38±0.05	(CuZn30) Pirinç / Brass	—
TD 2137.80 RPK	KİLİTLİ DİŞİ FİŞ 6.3 (YENİ TİP) (0.80) =RPK=	0.80	0.65 +0.1 / -0	0.38±0.05	(CuZn30) Pirinç / Brass	Kalay / Sn (3-5µ)
TD 2137.80 RÇN	KİLİTLİ DİŞİ FİŞ 6.3 (YENİ TİP) (0.80) =RÇN=	0.80	0.65 +0.1 / -0	0.40±0.05	Nikel kaplı çelik / Nickel plated Steel	Nikel / Ni (≥1.5µ)
TD 2137.90 RP	KİLİTLİ DİŞİ FİŞ 6.3 (YENİ TİP) (0.90) =RP=	0.80	0.70 +0.1 / -0	0.38±0.05	(CuZn30) Pirinç / Brass	—
TD 2137.90 RPK	KİLİTLİ DİŞİ FİŞ 6.3 (YENİ TİP) (0.90) =RPK=	0.80	0.70 +0.1 / -0	0.38±0.05	(CuZn30) Pirinç / Brass	Kalay / Sn (3-5µ)
MF 2137.80 RP	KİLİTLİ DİŞİ FİŞ 6.3 (YENİ TİP) (0.80) =RP=	0.80	0.65 +0.1 / -0	0.40±0.05	(CuZn30) Pirinç / Brass	—
MF 2137.80 RPK	KİLİTLİ DİŞİ FİŞ 6.3 (YENİ TİP) (0.80) =RPK=	0.80	0.65 +0.1 / -0	0.40±0.05	(CuZn30) Pirinç / Brass	Kalay / Sn (3-5µ)
MT 2137.80 RP	KİLİTLİ DİŞİ FİŞ 6.3 (YENİ TİP) (0.80) =RP=	0.80	0.65 +0.1 / -0	0.35±0.05	(CuZn30) Pirinç / Brass	—



**Kablo Kesiti**  
**Wire Section : 1 - 2.50 mm<sup>2</sup>**

Resim üzerinden ölçü almayınız  
do not measure on drawing

Tarih / Date	09.08.2011	İmza /Signature	Ölçek /Scale			
Çizen / Desing	M.Yağcı		5 / 1	01	Kilitleme Dili Sağlıklı Yaylanma yapması için, Yukarı doğru kaldırılmıştır.	10.07.2014
Onay / Approval	S.Gölcük			No	Değişiklik / Revision	Tarih/Date
		Parça Adı: Part Name <b>KİLİTLİ DİŞİ FİŞ 6.3 (YENİ TİP)</b>			Parça Kodu: Part Code <b>TD 2137</b>	